

VistaScan Mini View

Short introduction

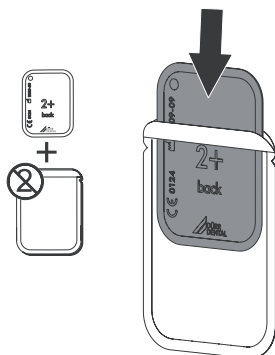
Reading the image data using the computer

The following information is supplementary to the appliance Installation and Operating Instructions.

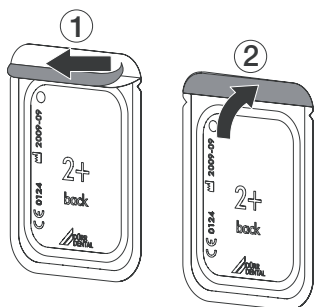
Always refer to the Installation and Operating Instructions of the appropriate appliance in which important information is detailed, e. g. Safety Instructions, Set-up, Electrical Connections, Disinfection, Cleaning, etc.

1 Reading the image data using the computer

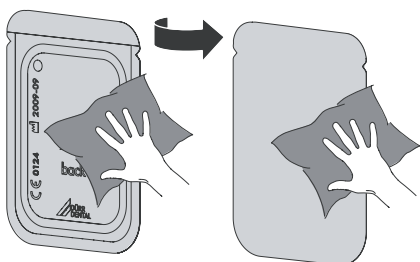
1.



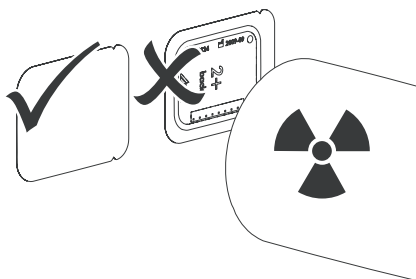
2.



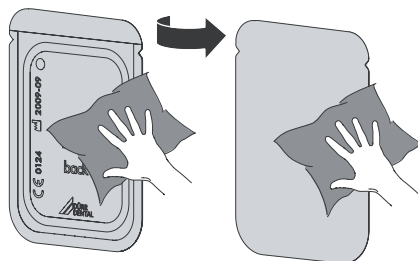
3.



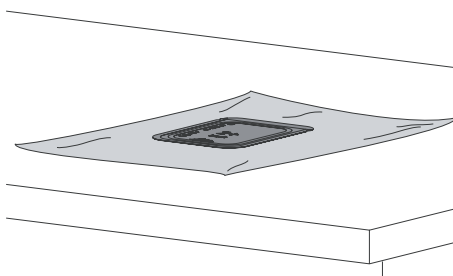
4.



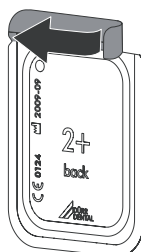
5.



6.



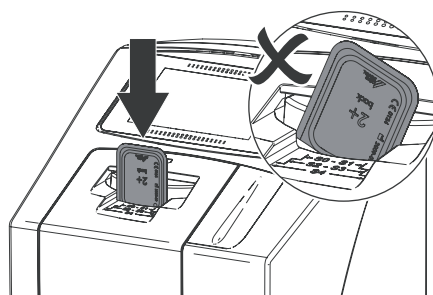
7.



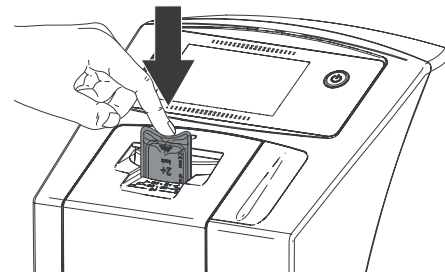
8.



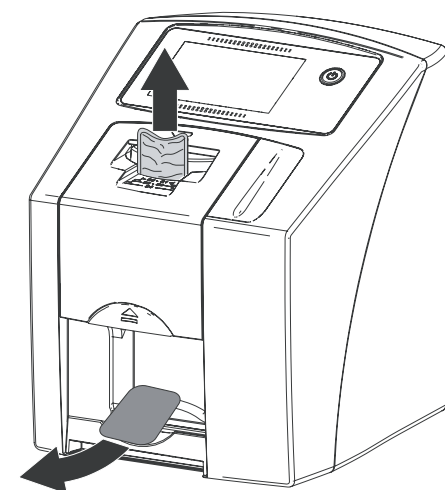
9.



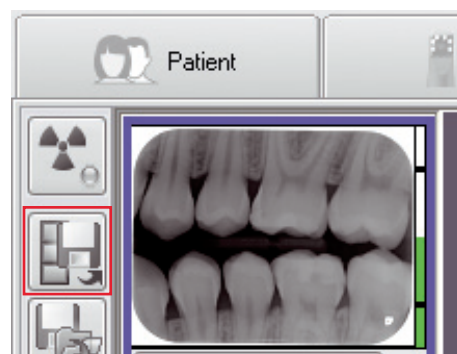
10.



11.

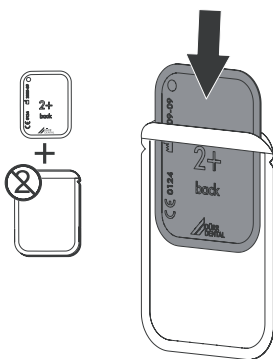


12.

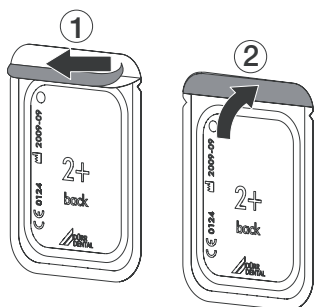


2 Scanning image data using the unit touch screen

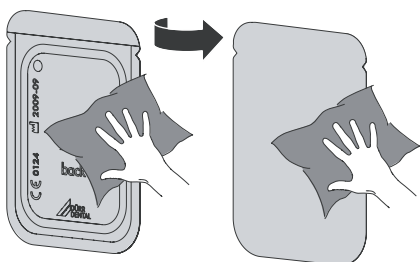
1.



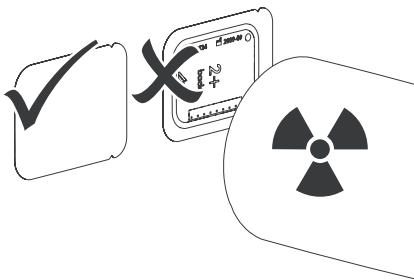
2.



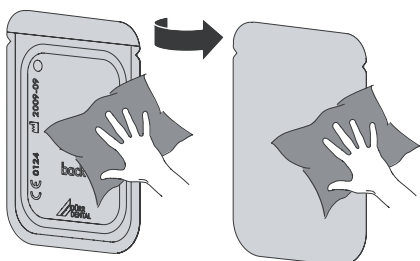
3.



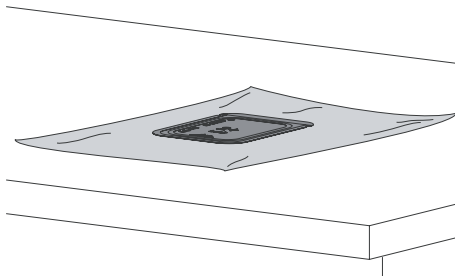
4.



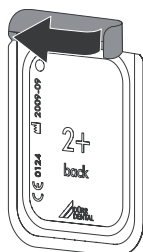
5.



6.



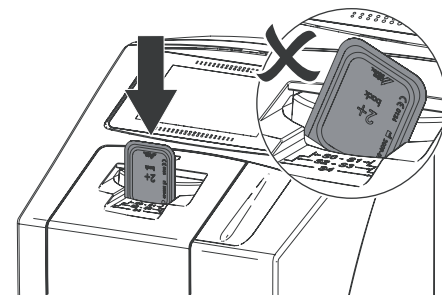
7.



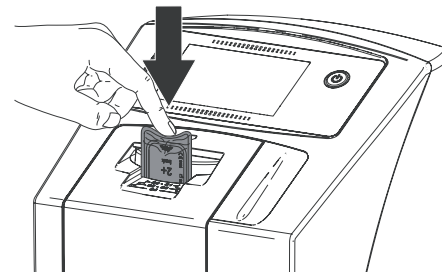
8.



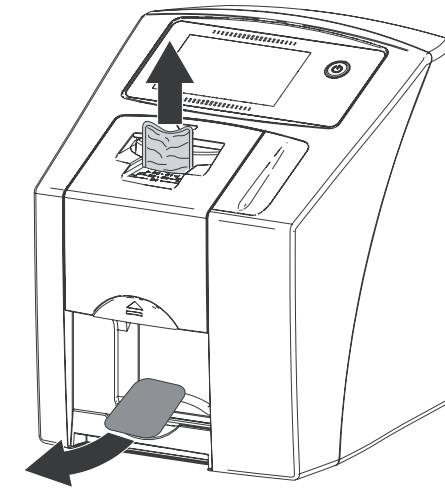
9.



10.



11.



12.

