

CS 1500
Quick Start Guide



Installing the Software

1. Insert the **CS Imaging Software** DVD in the DVD drive and install the software. See the **CS Imaging Software** documentation: *CS Imaging - Installation and Configuration Guide (SM998)*, for details of the installation procedure.

To install the imaging software using a TWAIN interface, see your imaging software user guide.

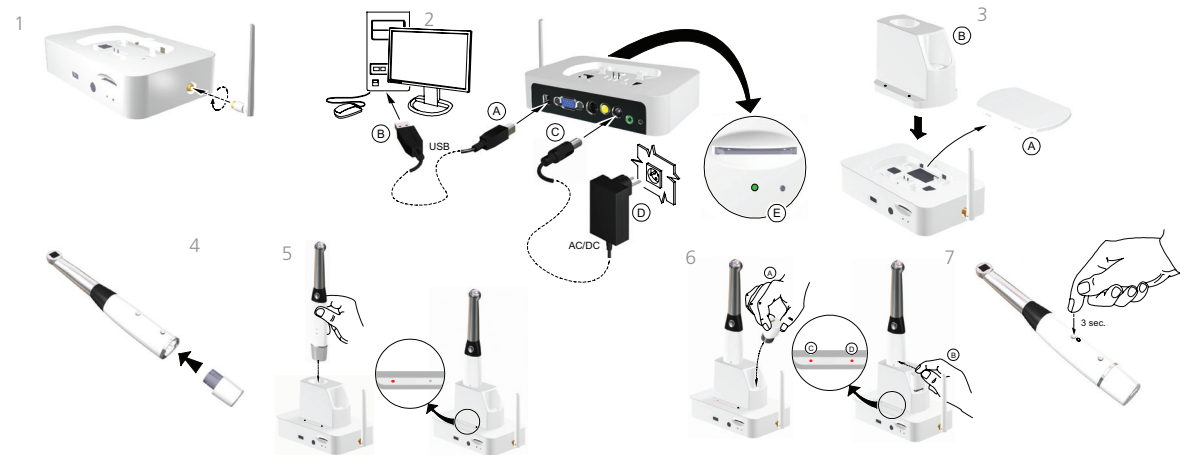
2. Insert the **CS Intraoral Cameras Installation Wizard** DVD in the DVD drive. If the DVD does not run automatically, navigate to your DVD drive in Windows Explorer and double-click the **Launcher.exe** file.
3. Follow the on-screen instructions to install the **Acquisition** interface and set up the camera.

A prompt asking you if you want to install the software might display.

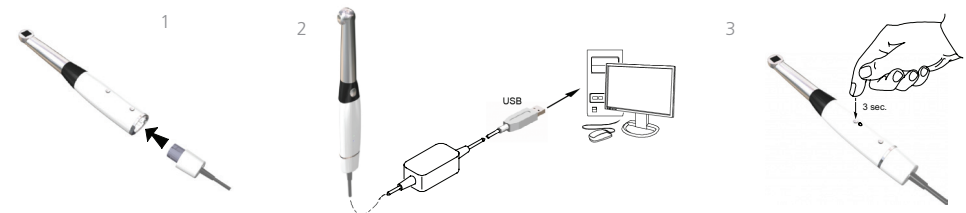


Check **Always trust software from "Carestream Health"** and click **Install**.

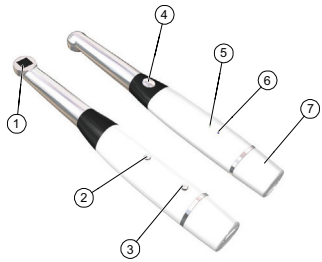
Setting up a Wireless Camera



Setting up a Wired Camera

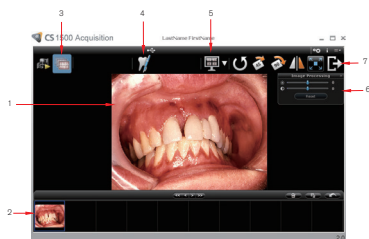


Camera Overview



- | | |
|-------------------------------------|-----------------------------------------|
| 1. LED and Lens window | 6. -Wired USB: USB connection indicator |
| 2. Power ON/OFF button | -Wireless: WiFi indicator |
| 3. -Wired USB: Cable release button | 7. -Wired USB: Rapid USB Cable |
| -Wireless: Battery Release button | -Wireless: Battery |
| 4. Shutter Release button | |
| 5. Battery indicator | |

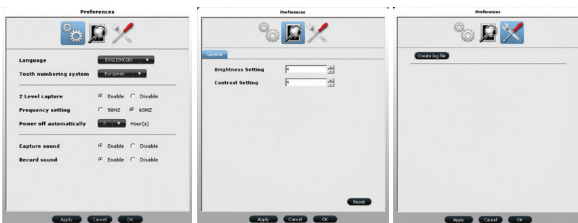
Acquisition Interface Overview




1. Review Screen
2. Image Gallery
3. Review button
4. Tooth chart comment button
5. Select a format button
6. Image Processing Dialog box
7. Exit button

Preference Settings

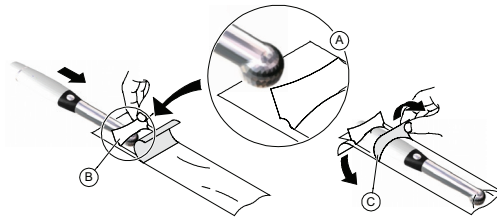
On the **Acquisition** interface, click  to set the camera and software options.



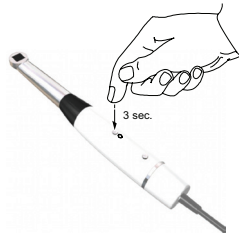
 **Important:** Ensure that the proper frequency setting is selected for your region. The wrong setting can negatively impact image quality.





Recording or Viewing Videos on a Computer

1. Wipe the lens of the camera with a moist, lint-free cloth or lens tissue.
2. Install a sheath on the camera.





3. Power the camera on.

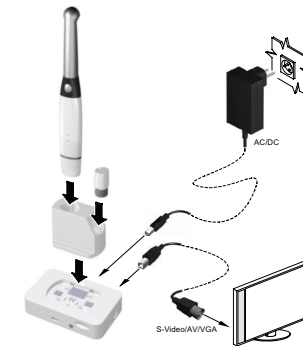


4. Start the **CS Imaging Software**.
If using imaging software via TWAIN interface, see the *CS 1500 User and Installation Guide*.
5. Create or open a patient record, if applicable.
6. In the **CS Imaging Software**, click  or  and select your camera.
7. Have the patient fully open their mouth.
8. Hold the camera over the area of interest. The video image appears in the preview screen.
9. To record the video, on the **Acquisition** interface, click  to record and relick to stop the recording.
10. Use the toolbar options to adjust, save, or delete recorded videos.
11. When you are done, click  to close the **Acquisition** interface.
12. Remove and dispose of the protective sheath when you have finished with the current patient.

Note: The video feature is not available when using the camera with a TWAIN interface.

Capturing or Viewing Images

1. Repeat steps 1-8 from **Recording or Viewing Videos**.
2. To capture an image: Press the **Shutter Release** button on the camera. OR Click  on the **Acquisition** interface.
3. Use the toolbar options to adjust, save, or delete captured images.
4. When you are done, click  to close the **Acquisition** interface.
5. Remove and dispose of the protective sheath when you have finished with the current patient.



Capturing or Viewing Images on a Monitor

1. Connect the camera to a monitor.
2. Repeat steps 1-3 from **Recording or Viewing Videos on a Computer**.
3. Have the patient fully open their mouth.
4. Hold the camera over the area of interest.
5. Press the **Shutter Release** button on the camera to capture an image. The still image appears on the video monitor.
6. Press the **Shutter Release** button on the camera half-way down and release it to view live video on the video monitor.
7. Remove and dispose of the protective sheath when you have finished with the current patient.

Carestream Dental

A Division of Carestream Health, Inc.
150 Verona St.
Rochester, NY USA 14608

